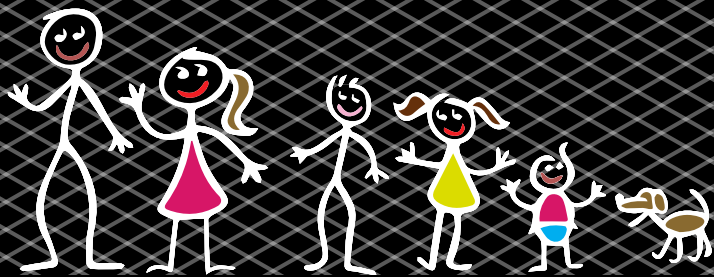


PHONE (06) 358 2255 FAX (06) 358 2258  
EMAIL RECEPTION@TEAROHANOA.ORG.NZ

12-28 BRENTWOOD AVENUE,  
PO BOX 7141, PALMERSTON NORTH

COMMUNITY SERVICES

te aroha noa



2019

# ANNUAL REPORT + CALENDAR



te aroha noa

COMMUNITY SERVICES





# CEO'S REPORT 2018

## NGA MIHI NUI KI A KOUTOU, GREETINGS, TALOFA LAVA, KIA ORANA, MALO E LELEI

Over this last year, one significant theme that has been a thread through our mahi has been the question of 'what is Te Aroha Noa?' There are many answers to this question, as it is not just one thing. Te Aroha Noa has grown, evolved and changed in its expression over the years, but at its heart it has been consistent with its own identity. This year, as we have encountered changes and considered what is needed in response, we have continued to reflect deeply.

So, what is Te Aroha Noa? It is an organisation built on transformative social practice that has served the south western suburbs of Palmerston North for 30 years. It is an innovative, multidisciplinary, holistic and integrated service provider that seeks to empower and develop community. It is a whānau that seeks to live out healthy whānau in a relational way that is inclusive and mana enhancing. It is an ever evolving, ongoing mission to respond to the needs of our community through care and love.

The answer is quite literally found at the heart of Te Aroha Noa itself. At the centre of Te Aroha Noa, at its very ngākau, is Aroha. It is the nature of its identity, the power of its transformative presence and the heart of its practice.

I have had the privilege over the last year to consistently see this kind of love in action, from warm conversations on the couch in our gathering space to large scale co-design workshops, from parents learning alongside their children to the imagination of a possible Community Hub. Te Aroha Noa is, and continues to be, a place where transformative love is borne out in every part of our practice.

Paul talked about this kind of love in his letter to the early Christian people in a place called Corinth. It is a popular liturgy that you may have heard at many weddings you have been to. To paraphrase, he says that love is the only thing that gives anything its meaning, and even the greatest feats you could possibly do or imagine without love are simply empty.

*Love is what transforms everything*  
*Love forever imagines new possibilities and calls them into being*  
*Love continues to expand its arms and invites everyone in - everyone belongs, there are no 'others'*  
*Love is never neutral - it always stands for and acts for the good of the one and the many*  
*Love does what is needed to grow everything into its fullest potential*  
*Love will never give up, ever*

Last Christmas, Te Aroha Noa had the privilege of being invited to attend the Mayor's Christmas function, where one of our staff spoke passionately about her love of community and the hopes and dreams of her community being a safe place for her tamariki and mokopuna to grow. She spoke about how she, through great courage and love, advocated for change so her local park could be upgraded and the children in her community had a safe and enjoyable place to play. As a result, the largely empty and derelict reserve received a massive makeover. Nine months later, the transformation of the Raleigh Street Reserve was completed with Steven Adams, one of New Zealand's most famous athletes, opening the new basketball court. How did this transformation happen? When one woman, through great love, imagination, conviction, courage and support decided that something different was needed, she found her voice and continued to act for the cause until imagination became reality. This is Te Aroha Noa lived out, this love in action, and it transformed everything. What would happen if each person were to live and love in such a transformative way? How different would our homes, communities, societies and worlds be? The possibility exists!

TE AROHA NOA IS THE PLACE WHERE TOGETHER WE COURAGEOUSLY LIVE OUT LOVE IN ACTION, SO WE CAN TURN OUR IMAGINATION OF A BETTER WORLD INTO REALITY.

*Tuhia ki te rangi, tuhia ki te whenua*  
*Tuhia ki te ngākau o te tangata katoa*  
*Ko te mea nui, ko te aroha*

Write it on the sky, write it on the land  
Write it on the heart of all people  
The greatest thing is love

**RENÉ AISH**  
Chief Executive Officer



# CHAIRPERSONS REPORT 2018

## HE RANGI TĀ MATAWHĀITI, HE RANGI TĀ MATAWHĀNUI

A PERSON WITH NARROW VISION HAS A RESTRICTED HORIZON; A PERSON WITH WIDE VISION HAS PLENTIFUL OPPORTUNITIES

Te Aroha Noa continues to have an expansive vision "To be a God inspired community unleashing the potential of all people(s)". This vision gives us plenty of opportunities. Imagine what it means to unleash the potential of all people(s) within our community. Since our community is increasingly diverse we need to know and hear the voices of many in order to know the potential that sits amongst us.

Listening is important and just recently TANCS held an interactive event that allowed the community to share their thoughts and tell us what is important to them and to tell us some of their personal dreams and aspirations. This event was one of many moments that TANCS has created and it is in these moments of listening that we create an opportunity to innovatively respond to not only the needs but the aspirations of the voices within our community.

To be a space that enables people to reach their full potential also means that we must be prepared for the moment that we release some of our own whānau as they continue to discover who they are and allow themselves to be courageous and bold enough to journey on other pathways. Such is the case with our CEO who recently resigned so that he might further explore who he is and where the next stretch of the journey will take him. We have valued Rene's time with us in his capacity as CEO and although he continues to remain as part of the whānau we wish to offer him our thanks.

At this time, I would also like to acknowledge our whānau, the staff. In times of change and uncertainty, they have shown resilience and a commitment to their work because of their love for what they do. I don't make light of the changes that have occurred, but a proverb that always gives perspective is the whakatauki "Mate atu he tētēkura, ka whakaeke mai he tētēkura". As one frond perishes, another grows in its place'. As we consider what lays ahead, new energy and a new sense of purpose is emerging. The future promises to be exciting.

Our holistic approach to health and wellbeing is very much to the forefront as we near developing a Health Centre in partnership with the Health Hub Project NZ. This Centre will form a part of a Community Hub which

will include a community kitchen, training rooms and potentially the community library. For these big picture plans, we are looking for the assistance and support from Government, our City Council and funding providers.

Thank you to our community, including staff, Trustees, City Councillors, funding providers, partners, and supporters. We are who we are, because of each one of you.

**JOSIE TE KAHU**  
Chairperson



**te aroha noa**  
COMMUNITY SERVICES

THE CALENDAR HIGHLIGHTS SOME OF THE EVENTS AND KEY HAPPENINGS THROUGHOUT THE PAST YEAR. THIS IS BY NO MEANS THE FULL PICTURE.

**TE AROHA NOA HAS SO MUCH MORE TO  
OFFER TO COMMUNITY.**

12-28 BRENTWOOD AVENUE, PO BOX 7141, PALMERSTON NORTH  
PHONE (06) 358 2255 FAX (06) 358 2258 EMAIL [RECEPTION@TEAROHANOA.ORG.NZ](mailto:RECEPTION@TEAROHANOA.ORG.NZ)



# JANUARY

1

New Year's Day

2

Day after New Year's Day

3

4

5

6

7

8

9

10

11

12

13

14

15

16

17

18

19

20

21

Wellington Anniversary

22

23

24

25

26

27

28

Auckland Anniversary

29

30

31



te aroha noa  
COMMUNITY SERVICES

## AQUA DAY AND KIDZLIFE

Kidz LIFE  
Learning In a Fun Environment



### KIDZLIFE

The KidzLIFE Holiday Programme has again proved its value with full rolls during the school holidays. Our programme ensures that we use our local community resources. Amongst many exciting things we have visits to Te Patikitiki Library, Tui, Farnham and Takaro Parks, Te Manawa Museum and the Lido Aquatic Centre. These always get the thumbs up from the kids. We thank all those who offer to volunteer. Without our volunteers the programme wouldn't be able to reach so many children.



### AQUA DAY

This summer activity, held at the start of each year, brings whānau out into Farnham Park for water play. The giant water slide is a crowd pleaser for all and some take the challenge to bounce and slide down from great heights. Others prefer to station themselves in the water trough pouring water into containers over and over again, and some delight in running and dodging the water sprinklers.



12-28 BRENTWOOD AVENUE, PO BOX 7141, PALMERSTON NORTH  
PHONE (06) 358 2255 FAX (06) 358 2258 EMAIL [RECEPTION@TEAROHANOA.ORG.NZ](mailto:RECEPTION@TEAROHANOA.ORG.NZ)

# FEBRUARY

1

2

3

4

Nelson Anniversary

5

6

Waitangi Day

7

8

9

10

11

12

13

14

St Valentines Day

15

16

17

18

19

20

21

22

23

24

25

26

27

28



MARCH

1

2

3

4

5

6

7

8

9

10

11

Taranaki Anniversary

12

13

14

15

16

17

18

19

20

21

22

23

24

25

Otago Anniversary

26

27

28

29

30

31



APRIL

1

2

3

4

5

6

7

Daylight Saving Ends

8

9

10

11

12

13

14

15

16

17

18

19

Good Friday

20

21

22

Easter Monday

23

Southland Anniversary

24

25

ANZAC Day

26

27

28

29

30

## FAMILY/WHĀNAU DEVELOPMENT TEAM



### KO TE WHAEA TE TAKERE O TE WAKA

- MOTHERS ARE LIKE THE HULL OF A CANOE, THEY ARE THE HEART OF THE WHĀNAU.

This whakatauki reminds us that like the hull on a waka, which provides stability, mothers are leaders in providing stable, nurturing and safe environments for tamariki. While our dynamic practice engages entire whānau, often our mahi can begin with a mother who is seeking something different for her whānau and who makes the first courageous step to connect with our service. The transformational work that whānau undergo not only cultivates changes in their immediate world but shapes the generations that follow. This could be support over a life-change like moving, deciding to live violence free lives, wanting to embrace education (after a negative and disheartening experience), or simply want to feel connected to their community. The reasons whānau walk through our door is varied and we know that experiencing a service that truly cares has a significant influence on what encourages whānau on the growth journey.

We are developing an even stronger foundation in Nga Takepu (life guiding principles) as a pathway not only to our mahi but as a way of life. We embrace opportunities to share and develop our practice alongside social work students and partnering organisations and we are honoured to have the opportunity to create meaningful relationships with whānau and to journey with whānau in pursuit of mauri ora.

“ KO MANAWARU TE MAUNGA  
KO HOROUTA TE WAKA  
KO TE ARAI TE AWA  
KO RONGOWHAKAATA TOKU IWI  
KO NGATI KAIPOHO TOKU HAPU  
KO KERI RAPIRA TOKU INGOA ”

Kia Ora my name is Keri Rapira. My journey with Te Aroha Noa began as a HIPPY tutor 7 years ago. If you'd told me then that 7 years later I would be a qualified social worker I would have most probably laughed. Being a HIPPY tutor played a significant role in my growth, encouraging me to pursue things I never dreamt possible. Until then my most important job had been raising my three children and I had never considered that being a great mum could also mean fulfilling and pursuing my own greatness. During my work with young mums in He Ngākau Matua, I chose to study social work at Te Wānanga O Aotearoa. It was important to continue challenging my perspective and view of the world and not simply sit where I felt comfortable. My practice as a social worker is deeply embedded in my faith and my belief that every person is born with greatness, purpose and worthy to be loved. As a new practitioner, my journey has only begun and I look forward to working with whānau who, with their greatness, will continue to grow and inspire me.



12-28 BRENTWOOD AVENUE, PO BOX 7141, PALMERSTON NORTH  
PHONE (06) 358 2255 FAX (06) 358 2258 EMAIL [RECEPTION@TEAROHANOA.ORG.NZ](mailto:RECEPTION@TEAROHANOA.ORG.NZ)

[WWW.TEAROHANOA.ORG.NZ](http://WWW.TEAROHANOA.ORG.NZ)





# MAY

1

2

3

4

5

6

7

8

9

10

11

12

Mother's Day

13

14

15

16

17

18

19

20

21

22

23

24

25

26

27

28

29

30

31



## MATARIKI

IN JUNE EACH YEAR, TE AROHA NOA EARLY CHILDHOOD CENTRE'S MOST ANTICIPATED EVENT, MATARIKI HAPPENS.

THIS YEAR, THE CELEBRATIONS EVOLVED AND INSTEAD OF DOING OUR EVER-POPULAR WEARABLE ARTS EVENT WE CHANGED DIRECTION AND CREATED A WHOLE MONTH OF DEEPENING OUR LEARNING AND CONNECTEDNESS TO TE AO MĀORI.



Exploring the domains of Nga Mahi Toi (Arts and Crafts), Kapa Haka, Raranga Harakeke (Flax Weaving) and Nga Mahi Mora (Gardening) we hosted a number of workshops where people from our community and whānau could share their knowledge and expertise with the whole community. This increased the whakawhānaungātanga kaupapa of our centre. Workshops for our tamariki and whānau included gardening, cooking, poi, rakau, weaving and working with clay. The collaborative story of knowledge helped to form new relationships, assisted parents to confidently share with others and learn to be able to contribute. Most of all it provided opportunities for our tamariki to learn beside their parents.

The final week provided an opportunity for the tamariki to perform a Kapa Haka to their whānau and then to share a meal together which everyone contributed to the preparation of. The month of learning was a true reflection of our centre's kaupapa and underpinning core value that, "parents are their child's first and most important educator and that within our Early Childhood Centre it is a space for both parent and child to learn and develop new skills together.

12-28 BRENTWOOD AVENUE, PO BOX 7141, PALMERSTON NORTH  
PHONE (06) 358 2255 FAX (06) 358 2258 EMAIL [RECEPTION@TEAROHANOA.ORG.NZ](mailto:RECEPTION@TEAROHANOA.ORG.NZ)

# JUNE

1

2

3

Queen's Birthday

4

5

6

7

8

9

10

11

12

13

14

15

16

17

18

19

20

21

22

23

24

25

26

27

28

29

30



- 1
- 2
- 3
- 4
- 5
- 6
- 7
- 8
- 9
- 10
- 11
- 12
- 13
- 14
- 15
- 16
- 17
- 18
- 19
- 20
- 21
- 22
- 23
- 24
- 25
- 26
- 27
- 28
- 29
- 30
- 31



te aroha noa  
COMMUNITY SERVICES

**HIPPY**  
Learning to learn together

**HIPPY** (Home Interaction Programme for Parents and Youngsters) is a home-based programme that helps parents create experiences that lay the foundation for their children’s success in school and later life. HIPPY is designed specifically for those whānau who need support with their tamariki’s preschool education and relationship strengthening with their tamariki.

**HIPPY** is based on the premise that whānau are their tamariki’s first and most important teachers. It is unique in that whānau through participation develop the skills and confidence to take on this important role.

Many parents, for whom school was a struggle, find they have talents they were unaware of and this is the beginning of a new phase in their life. HIPPY is truly a two-generational programme that as well as setting children

on a positive pathway through education opens doors for parents into training, education and employment.

**HIPPY** Palmerston North and Te Aroha Noa Community Services wish to acknowledge and sincerely thank Daryl-Anne George for the dedication, endless love and support she has given to our teams, the HIPPY whānau and community for the past 2 years. We wish all the very best as she moves into the next chapter.  
*Ngā mihi tino nui e hoa.*

**JODIE MATENGA-PHILIPS**



**HENGĀKAU  
MATUA**

HE NGĀKAU MATUA IS A MANA-ENHANCING PLACE FOR YOUNG PARENTS TO BELONG AND GROW WITH THE SUPPORT OF A TEAM AS THEIR PERSONAL CHEERLEADERS.

Our team consists of Early Childhood Educators who as well as facilitating our tamariki’s learning provide practical parenting advice, Educators who support our young women with their career goals and learning and a Whānau Worker who empowers them to believe they can achieve these goals.

We provide transport for parents and their tamariki, kai and a warm encouraging atmosphere. Our Early Childhood Centre is just next door although small babies remain with their mothers in the He Ngākau Matua hub. We have outings with our tamariki in order to assist our parents to build strong bonds with their children so that they become confident in their role as parents.

The three main strands we deliver in the Learning Hub consist of parenting, self-development and education. He Ngākau Matua is a beautiful place of growth, change and lots of laughs and fun.

**POU VALU**



12-28 BRENTWOOD AVENUE, PO BOX 7141, PALMERSTON NORTH  
**PHONE** (06) 358 2255 **FAX** (06) 358 2258 **EMAIL** RECEPTION@TEAROHANOA.ORG.NZ

- 1
- 2
- 3
- 4
- 5
- 6
- 7
- 8
- 9
- 10
- 11
- 12
- 13
- 14
- 15
- 16
- 17
- 18
- 19
- 20
- 21
- 22
- 23
- 24
- 25
- 26
- 27
- 28
- 29
- 30
- 31



SEPTEMBER

- 1Father's Day
- 2
- 3
- 4
- 5
- 6
- 7
- 8
- 9
- 10
- 11
- 12
- 13
- 14
- 15
- 16
- 17
- 18
- 19
- 20
- 21
- 22
- 23South Canterbury Anniversary
- 24
- 25
- 26
- 27
- 28
- 29
- 30Daylight Saving Begins
- 31



YOUTH

HE NGĀKAU NOA

HE NGĀKAU NOA IS A SAFE SPACE FOR OUR YOUNG WOMEN WHERE THEY CAN CONNECT, GROW AND SERVE OTHERS. BY CREATING AN ENVIRONMENT AND CULTURE BUILT ON THESE VALUES OUR YOUNG WOMEN ARE EMPOWERED TO 'GET TO KNOW' THEMSELVES, OTHERS AND THE WORLD AROUND THEM MORE FULLY.

It is a privilege to see the journey of one of our young women who has struggled with social anxiety and been disengaged from school for a number of years having the courage to engage in design school once a week. It is an environment that places her outside of her comfort zone and yet she has grasped this opportunity and excelled. She as incredible artistic strengths which have flourished in this environment. This amazing young woman is growing in confidence on a daily basis as she steps into new opportunities that are put before her.

KIRSTIE BROOKING  
HE NGĀKAU NOA PROGRAMME FACILITATOR



HE NGĀKAU TOA

HE NGĀKAU TOA ENGAGES WITH DISENGAGED YOUNG MEN IN OUR COMMUNITY GIVING THEM THE OPPORTUNITY TO GROW AND UNLEASH THEIR POTENTIAL WITHIN THEMSELVES BY BEING A VALUED PART OF THIS LIFE LEARNING PROGRAMME.

We currently have five young men who have been excluded from formal education and are now open to learning more about themselves, building their confidence and developing positive skills so that they can begin to make independent decisions.

He Ngākau Toa is a safe space, creating an atmosphere suitable for constructive and yet fun learning. We start by working with the young person to create short and long term goals. This involves working with them on what they want for the future and gaining more knowledge about what they deserve within this learning space.

We then implement learning activities that our young men are interested in and each Thursday there is a fun activity with the He Ngākau Noa group which allows the young adults to begin building positive relationships with each other.

STEWART FATA  
HE NGĀKAU TOA PROGRAMME FACILITATOR



12-28 BRENTWOOD AVENUE, PO BOX 7141, PALMERSTON NORTH  
PHONE (06) 358 2255 FAX (06) 358 2258 EMAIL RECEPTION@TEAROHANOA.ORG.NZ

OCTOBER

- 1
- 2
- 3
- 4
- 5
- 6
- 7
- 8
- 9
- 10
- 11
- 12
- 13
- 14
- 15
- 16
- 17
- 18
- 19
- 20
- 21
- 22
- 23
- 24
- 25Hawke's Bay Anniversary
- 26
- 27
- 28Labour Day
- 29
- 30
- 31





NOVEMBER

- 1
- 2
- 3
- 4Marlborough Anniversary
- 5
- 6
- 7
- 8
- 9
- 10
- 11
- 12
- 13
- 14
- 15Canterbury Anniversary
- 16
- 17
- 18
- 19
- 20
- 21
- 22
- 23
- 24
- 25
- 26
- 27Chatham Islands Anniversary
- 28
- 29
- 30



CHRISTMAS IN THE PARK

CHRISTMAS IN FARNHAM PARK IS A FREE FAMILY EVENT IN THE HEART OF HIGHBURY. IT IS A CELEBRATION OF ALL THAT IS HIGHBURY, SHOWCASING LOCAL TALENT AND COLLABORATION OF AMAZING LOCAL ORGANISATIONS AND COMMUNITY MEMBERS.

The evening is filled with musical entertainment, bouncy castles, games, free kai and Santa even pays a visit! This event brings people together who are proud of their community and provides them with the opportunity to connect with one another by having lots of fun.



12-28 BRENTWOOD AVENUE, PO BOX 7141, PALMERSTON NORTH  
PHONE (06) 358 2255 FAX (06) 358 2258 EMAIL RECEPTION@TEAROHANOA.ORG.NZ

DECEMBER

- 1
- 2Westland /Chatham Islands Anniversary
- 3
- 4
- 5
- 6
- 7
- 8
- 9
- 10
- 11
- 12
- 13
- 14
- 15
- 16
- 17
- 18
- 19
- 20
- 21
- 22
- 23
- 24
- 25Christmas Day
- 26Boxing Day
- 27
- 28
- 29
- 30
- 31





This year the Community Development team have been focusing on our consultation with our community.

We noticed themes and collaboratively with the community developed game changer statements. We then explored how we might make changes that would make a difference in our community.

## WE NOTICED THAT...

Health professionals have the privileged position and can become influences of good practice.



## IT WOULD BE A GAME CHANGER IF...

Health professionals worked in partnership with health seekers

## HOW MIGHT WE?

# GIVING PEOPLE CONTROL OF THEIR OWN HEALTH PARTNERSHIP NOT PATIENT- RELATIONSHIP

**MARAE BASED DAYS (BRING IN HEALTH PROFESSIONALS)..**

PEOPLE FEEL CONFIDENT IN  
THEIR OWN SPACE

## GP'S ARE RUN LIKE BUSINESSES RATHER THAN SOCIAL JUSTICE FOCUSED

## LEARN FROM THE TEAMS THAT NAVIGATE THE FLAWED SYSTEM WELL

## HE NGĀKAU ORA ... A STUDY OF HEALTHY COMMUNITY

## 15 MINS IS NOT ENOUGH TIME

HAVE MEDICAL SERVICES SOMEWHERE PEOPLE  
ALREADY HAVE RELATIONSHIPS AND HAVE TRUST

12-28 BRENTWOOD AVENUE, PO BOX 7141, PALMERSTON NORTH  
**PHONE** (06) 358 2255 **FAX** (06) 358 2258 **EMAIL** [RECEPTION@TEAROHANOA.ORG.NZ](mailto:RECEPTION@TEAROHANOA.ORG.NZ)







# WE WOULD LIKE TO **THANK** THE FOLLOWING..

 **PALMERSTON NORTH CITY COUNCIL**

 **ORANGA TAMARIKI**

 **MINISTRY OF EDUCATION**

 **MINISTRY OF SOCIAL DEVELOPMENT**

 **TERTIARY EDUCATION COMMISSION**

 **PHO**

 **PALMERSTON NORTH COMMUNITY SERVICES COUNCIL**

 **MILVERTON TRUST**

 **GREAT POTENTIALS**

 **TG MACARTHY TRUST**


 **VODAFONE FOUNDATION**

 **FRIENDS OF TE AROHA NOA COMMUNITY SERVICES**

 **PITA PIT**

 **JUST ZILCH**

 **SALVATION ARMY**

 **PALMERSTON NORTH CENTRAL BAPTIST**

 **DEPARTMENT OF INTERNAL AFFAIRS**

 **CENTRAL ENERGY TRUST**

 **SUTHERLAND TRUST GOODMAN FIELDER**

 **LIDO AQUATIC CENTRE**

 **CLOUD 9**

 **MENZSHED MANAWATU**

 **HIGGINS**

 **GJ GARDNER**

 **TAKARO ROTARY CLUB**

 **ZONTA CLUB OF MANAWATU**

 **RICHIES KAI**

 **COUNTDOWN**

 **EVENT CINEMAS**

 **LIBER8 TRANSFORMATIONS**

 **STRATHLACHLAN FOUNDATION**



REPORT OF THE INDEPENDENT AUDITOR  
ON THE SUMMARY FINANCIAL STATEMENTS

To the Trustees of Te Aroha Noa Community Services Trust

The accompanying summary financial statements, which comprise the summary statement of financial position as at 30 June 2018, the summary statement of service performance, the summary statement of financial performance and summary cash flow statement for the year then ended, and related notes, are derived from the audited performance report of Te Aroha Noa Community Services Trust for the year ended 30 June 2018.

We expressed a qualified audit opinion on those financial statements in our report dated 23 November 2018 on the basis that control over donations and fees prior to being recorded is limited and that there are no practical audit procedures to determine the effect of the limited control.

These financial statements do not contain all the disclosures required for full financial statements under generally accepted accounting practice in New Zealand. Reading the summary financial statements, therefore, is not a substitute for reading the audited financial statements of Te Aroha Noa Community Services Trust.

Trustees' Responsibility for the Summary Financial Statements

The Trustees are responsible for the preparation of a summary of the audited performance report in accordance with PBE FRS-43: *Summary Financial Statements*.

Auditor's Responsibility

Our responsibility is to express an opinion on the summary financial statements based on our procedures, which were conducted in accordance with International Standards on Auditing (New Zealand) ISA (NZ) 810, "Engagements to Report on Summary Financial Statements".

Other than in our capacity as auditor, we have no relationship with, or interests in, Te Aroha Noa Community Services Trust.

Opinion

In our opinion, the summary financial statements derived from the audited performance report of Te Aroha Noa Community Services Trust for the year ended 30 June 2018 are consistent, in all material respects, with those financial statements, in accordance with PBE FRS-43.



Cotton Kelly  
23 November 2018

TE AROHA NOA COMMUNITY SERVICES TRUST  
Summary Financial Statements  
For The Year Ended 30 June 2018

STATEMENT OF SERVICE PERFORMANCE

For The Year Ended 30 June 2018

Description of the Entity's Outcomes:

To encourage empowered, self managed, resilient community through providing early intervention, integrated and holistic services to the community.

Description and Quantification (to the extent practicable) of the Entity's Outputs:

	Actual
Early Childhood Centres	
• Children attendance	133
HIPPY Programme	
• Number active in the program between 1 July 2017 and 30 June 2018.	34
• Number who graduated from the program in 2018.	6
Adult Education	
• Engaged in adult education.	446
Counselling	
• Number of new interventions.	89
• Clients who completed interventions.	139
• Clients who completed with their needs met (80% of goals achieved in case plan).	64
• Qualified counsellors available. (1.5 FTE)	4
Whanau Development	
• Number of new interventions.	69
• Clients who completed intervention.	43
• Clients who completed their needs met (80% of goals achieved in case plan)	34
Holiday Programmes	
• Programmes of 60 children	3
Youth Programmes	
• Youth attended	36

TE AROHA NOA COMMUNITY TRUST  
STATEMENT OF FINANCIAL PERFORMANCE  
For The Year Ended 30th June 2018

	Note	2018 \$	2017 \$
<b>Revenue</b>			
Fundraising and Other Revenue	413	3,469	
Donations and Capital Grants	37,197	45,069	
Revenue from Providing Goods and Services	1,662,332	1,722,151	
Investment Revenue	2,712	5,014	
Other Revenue	4,508	1,102	
<b>Total Income</b>		<b>1,707,162</b>	<b>1,776,805</b>
<b>Expenses</b>			
Employee and Volunteer Related Costs	1,409,313		1,428,990
Cost Relating to Providing Goods or Services	317,520		361,714
Other Expenses	64,098		70,348
<b>Total Expenses</b>		<b>1,790,931</b>	<b>1,861,052</b>
<b>Operating Deficit</b>		<b>(83,769)</b>	<b>(84,247)</b>

These financial statements should be read in conjunction with the notes to the summary financial statements and the Audit Report.



# TE AROHA NOA COMMUNITY SERVICES TRUST

## STATEMENT OF FINANCIAL POSITION

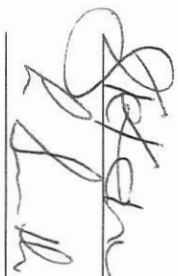
As at 30 June 2018

	Note	2018 \$	2017 \$
<b>Current Assets</b>			
Westpac Bank		266,621	103,678
Accounts receivable and prepayment		102,845	144,611
Investments		63,333	126,326
<b>Total Current Assets</b>		<b>432,799</b>	<b>374,615</b>
<b>Non-Current Assets</b>			
Property Plant & Equipment	1,372,350		1,406,400
Investments	-		2,000
<b>Total Non-Current Assets</b>		<b>1,372,350</b>	<b>1,408,400</b>
<b>Total Assets</b>		<b>1,805,149</b>	<b>1,783,015</b>
<b>Current Liabilities</b>			
GST payable	64,600		33,139
Accounts Payables	29,922		27,529
Accrued employment costs	129,695		151,910
Income received in advance	-		526
Current portion of loans	11,286		10,120
Unused Conditional grants	258,334		151,392
<b>Total Current Liabilities</b>		<b>493,837</b>	<b>374,616</b>
<b>Liabilities</b>			
Loans		107,422	120,740
<b>Total Liabilities</b>		<b>601,259</b>	<b>495,356</b>
<b>Net Assets</b>		<b>1,203,890</b>	<b>1,287,659</b>
<b>Accumulated Funds</b>		<b>1,203,890</b>	<b>1,287,659</b>

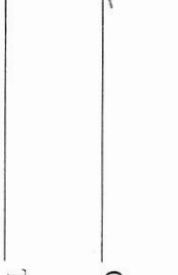
## Statement of Cash Flows

For the Year Ended 30 June 2018

<b>Net Cash Flows from Operating Activities</b>	<b>140,150</b>	<b>67,400</b>
<b>Net Cash Flows from Investing &amp; Finance Activities</b>	<b>22,793</b>	<b>(42,122)</b>
<b>Net Increase (decrease) in Cash</b>	<b>162,678</b>	<b>25,278</b>
<b>Bank Accounts &amp; cash at 1 July</b>	<b>103,678</b>	<b>18,400</b>
<b>Bank Accounts &amp; cash at 30 June</b>	<b>266,621</b>	<b>103,678</b>



Chairman Date: 19/11/18



Treasurer Date: 19/11/18

These financial statements should be read in conjunction with the notes to the summary financial statements and the Audit Report.



# TE AROHA NOA COMMUNITY SERVICES TRUST

Notes to the Summary Performance Report

For The Year Ended 30 June 2018

- The reporting entity is Te Aroha Noa Community Services Trust (the Trust). The Trust is domiciled in New Zealand and is a charitable trust incorporated under the Charitable Trust Act 1957. It is also a charitable organisation registered under the Charities Act 2005.
- The full Performance Report on which this summary is based, have been prepared in accordance with Generally Accepted Accounting Practice in New Zealand (NZ GAAP). They comply with Public Benefit Entity Simple Format Reporting – Accrual (not-for-profit) (PBE SFR – A (NFP)) and other applicable Financial Reporting Standards as appropriate that have been authorised by the External Reporting Board for Not-For-Profit entities. For the purposes of complying with NZ GAAP, the Trust is a public benefit not for profit entity and is eligible to apply PBE SFR – A(NFP) on the basis that it does not have public accountability and has total annual expenses of equal to or less than \$2 million per annum.
- The summary Performance Report have been extracted from the full Performance Report and are presented in New Zealand dollars. The Performance Report of Te Aroha Noa Community Services Trust including Statement of Service Performance, Statement of Financial Position, and Cash Flow Statement cannot provide a full understanding due to their summary nature. The understanding can be obtained only by reference to the annual Performance Report of the Trust.

- A copy of the Performance Report may be obtained on request from Te Aroha Noa Community Services Trust office at 12-14 Brentwood Avenue, Palmerston North. Phone number (06) 358 2255 or from online at [www.tearohanoa.org.nz](http://www.tearohanoa.org.nz)
- A list of related party transactions is included in the full performance report.
- There are no contingent liabilities as at 30 June 2018 (2017: nil)
- There are no capital commitments as at 30 June 2018 (2017: nil)
- The annual full Performance Report of Te Aroha Noa Community Services Trust have been audited by Cotton Kelly who have issued a qualified audit opinion in respect to the Performance Report on 23<sup>rd</sup> November 2018. Cotton Kelly have audited the summary Performance Report and found it to be consistent with the Annual Performance Report.
- The Trustees authorised the publication of this summary Performance Report on 23<sup>rd</sup> November 2018.

This summary Performance Report is in compliance with PBE FRS-43: Summary Financial Statements.

